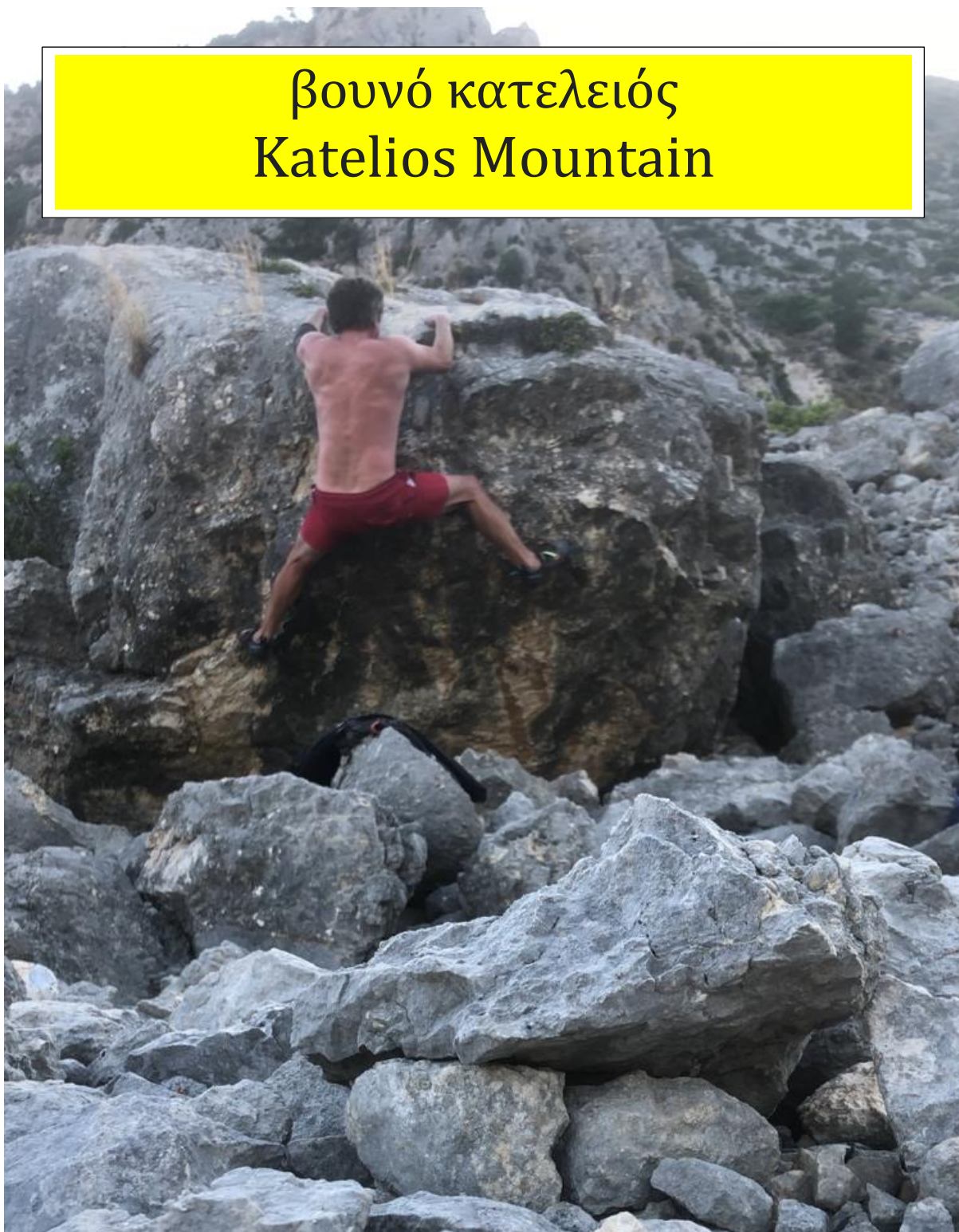


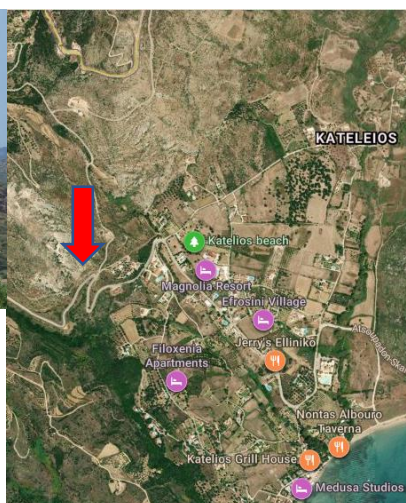
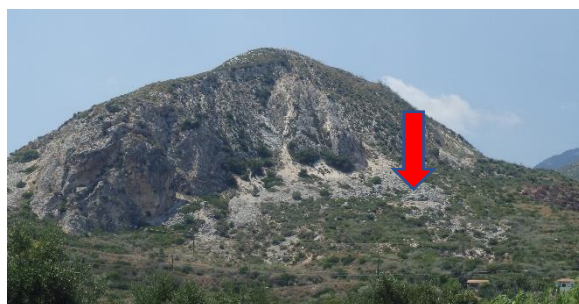
βουνό κατελειός Katelios Mountain



Two cracking blocs below the mountain above Katelious (the sport and trad potential looks amazing on the crags above). Good rock but some hard landings. The views south over the bay are breath taking.

Approach: Katelious is between the airport and the bigger town of Skala. The crags and boulder-field are obvious from Katelious looking up hill and inland. The best approach will be dictated by the state of the vegetation (parking on the little side road and coming in from

the east worked in July 2023 as there had been a bush-fire the day before). There are numerous laybys; pick one and follow your nose.



Location: The red arrows mark the bouldering. The two boulders sit on their own flat platform of scree.

Left Boulder



There will be more to do on this boulder, but this opener is a classic:

A **Kopis** 6a+ Sit start on small bubbly holds. Go right to an awkward upstanding pinch; get established to gain the top and mantel off.

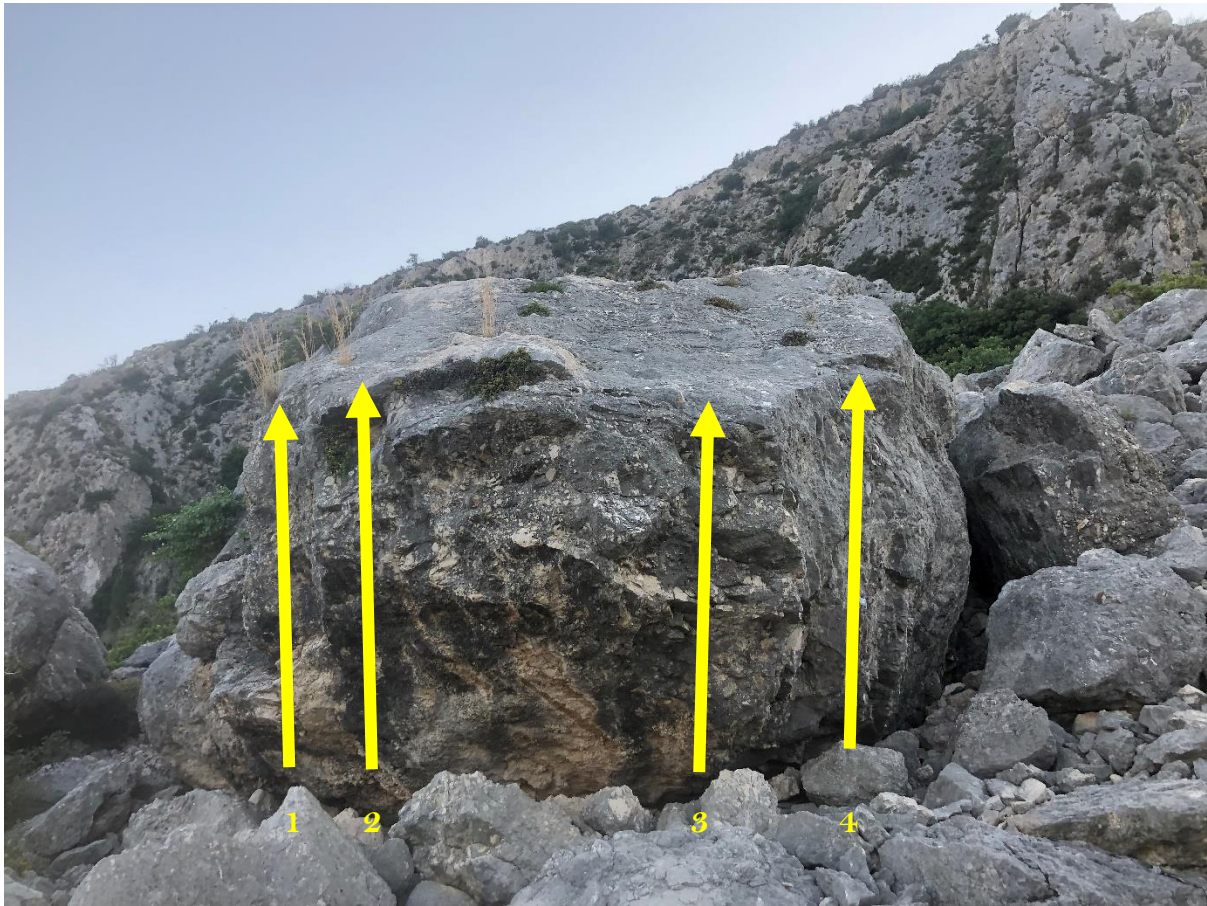
Right Boulder

1 **Stagones** 6b+ Sit start the left hand ledge. Slightly suspect blobs allow the top to be reached.

2 **Helios** 6b Slightly marred by a pointed landing. This climbs the left arete of the central face - sit using the highest holds in reach. Variant: a strict start from the lowest line of crimps, followed by a snatch to better holds (6b+).

3 **Unicorn** 6b Sit start. Pull up the arete and mantel over. Feet out left help.

4 **Pyrolithos** 6c Powerful undercutting and a flint-edge hold unlock the way to the lip. Sit start.



There are lots of other boulders around but most of them turn out to be too small. However, the rocks under the western end of the crags might yield some problems.

© John Hunt July 2023